

from the *WELL TEMPERED CLAVIER, BOOK 1*

# PRELUDE No. 10

MARIMBA

J. S. Bach  
arr. by SAFRI DUO  
Morten Friis & Uffe Savery

The first system of the prelude consists of two measures. The right hand (treble clef) plays a sequence of chords: G4-A4-B4, G4-A4-B4, G4-A4-B4, G4-A4-B4. The left hand (bass clef) plays a continuous eighth-note pattern: G3-A3-B3-C4-D4-E4-F4-G4-A4-B4-C4-D4-E4-F4-G4.

3

The second system consists of two measures. The right hand continues with chords: G4-A4-B4, G4-A4-B4, G4-A4-B4, G4-A4-B4. The left hand continues with the eighth-note pattern: G3-A3-B3-C4-D4-E4-F4-G4-A4-B4-C4-D4-E4-F4-G4.

5

The third system consists of two measures. The right hand continues with chords: G4-A4-B4, G4-A4-B4, G4-A4-B4, G4-A4-B4. The left hand continues with the eighth-note pattern: G3-A3-B3-C4-D4-E4-F4-G4-A4-B4-C4-D4-E4-F4-G4.

7

The fourth system consists of two measures. The right hand continues with chords: G4-A4-B4, G4-A4-B4, G4-A4-B4, G4-A4-B4. The left hand continues with the eighth-note pattern: G3-A3-B3-C4-D4-E4-F4-G4-A4-B4-C4-D4-E4-F4-G4.

9

The fifth system consists of two measures. The right hand continues with chords: G4-A4-B4, G4-A4-B4, G4-A4-B4, G4-A4-B4. The left hand continues with the eighth-note pattern: G3-A3-B3-C4-D4-E4-F4-G4-A4-B4-C4-D4-E4-F4-G4. A marking '\* )a' is placed above the first measure of the left hand.

The sixth system consists of two measures. The right hand continues with chords: G4-A4-B4, G4-A4-B4, G4-A4-B4, G4-A4-B4. The left hand continues with the eighth-note pattern: G3-A3-B3-C4-D4-E4-F4-G4-A4-B4-C4-D4-E4-F4-G4. A marking '\* )a' is placed above the first measure of the left hand, and 'etc.' is placed to the right of the second measure.

11

Musical notation for measures 11 and 12. The piece is in G major (one sharp) and 2/4 time. The right hand features a simple melody with quarter notes and rests, while the left hand plays a steady eighth-note accompaniment. A key signature change to D major (two sharps) occurs at the beginning of measure 12.

13

Musical notation for measures 13 and 14. The right hand continues the melody, and the left hand maintains the eighth-note accompaniment. The key signature remains D major.

15

Musical notation for measures 15 and 16. The right hand melody and left hand accompaniment continue. The key signature remains D major.

17

Musical notation for measures 17 and 18. The right hand melody and left hand accompaniment continue. The key signature remains D major.

19

Musical notation for measures 19 and 20. The right hand melody and left hand accompaniment continue. The key signature remains D major.

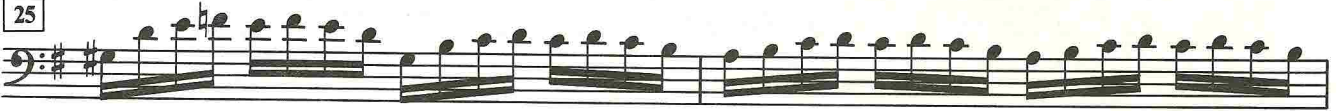
21

Musical notation for measures 21 and 22. The right hand melody and left hand accompaniment continue. The key signature remains D major.

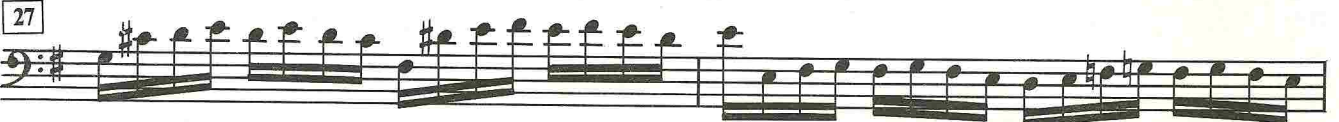
23 Presto



25



27



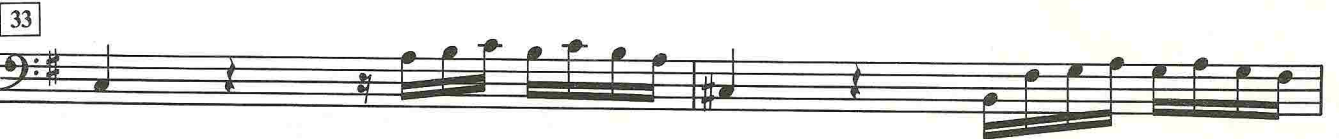
29



31



33



35



37



39



\*)b

*molto rit.*

\*)b

